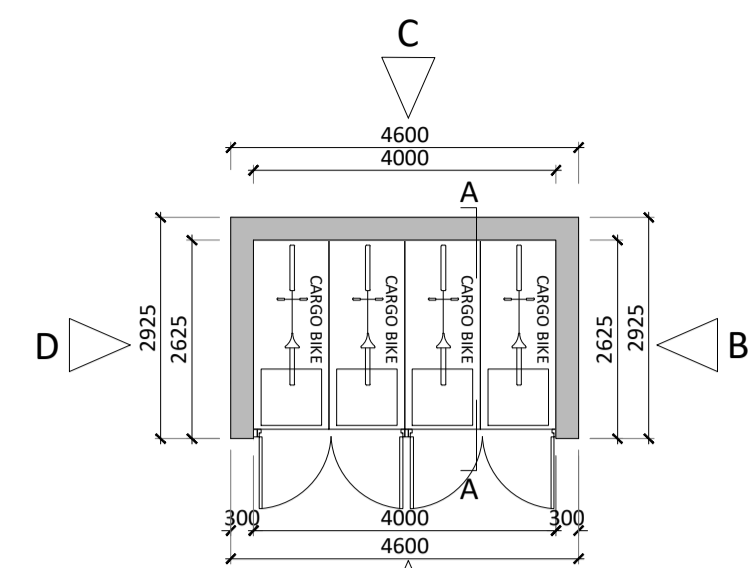
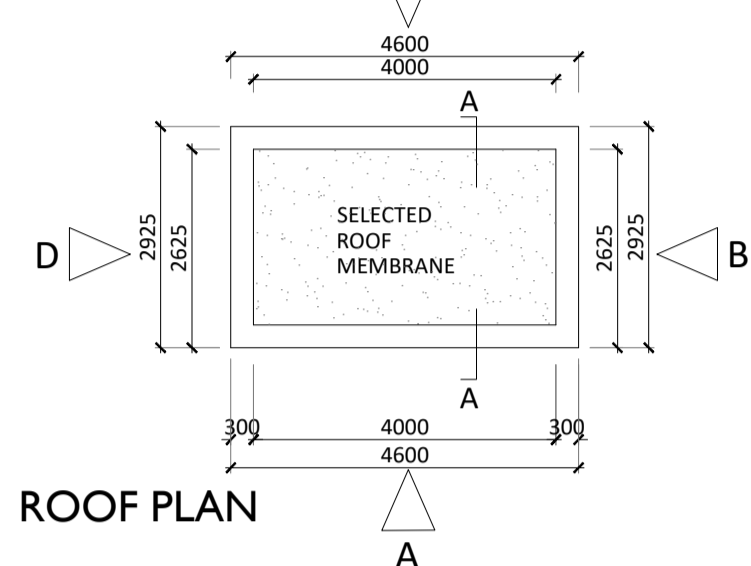


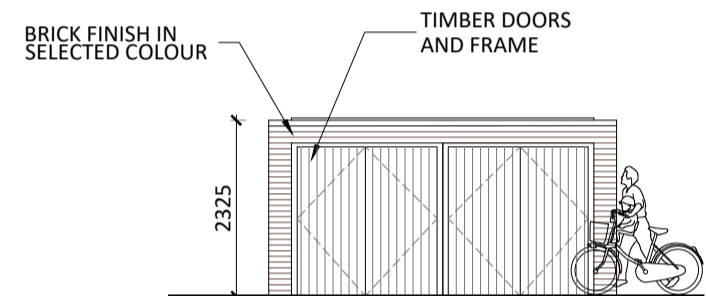
B1 - BIKE STORE (4 SPACES)



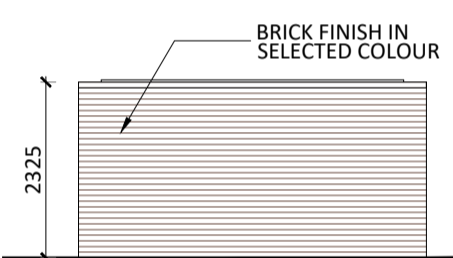
FLOOR PLAN



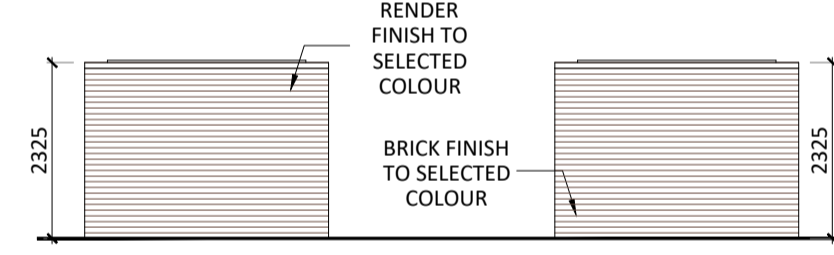
ROOF PLAN



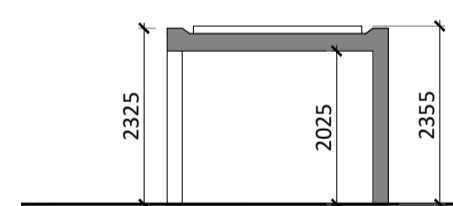
ELEVATION A



ELEVATION C

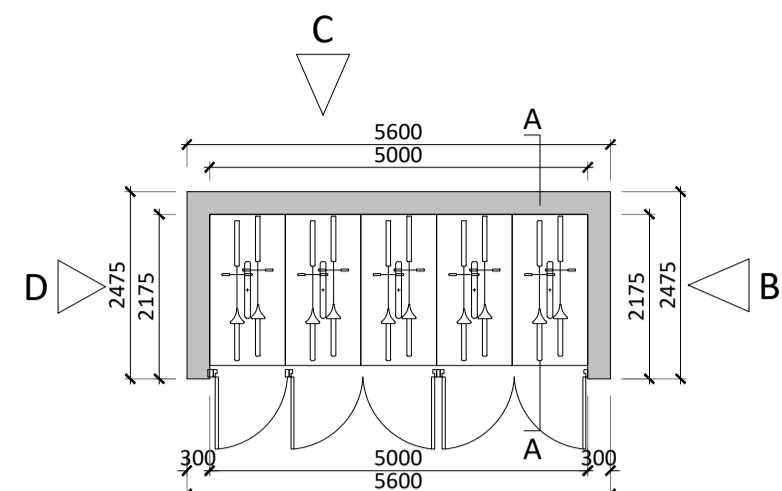


ELEVATION B & D

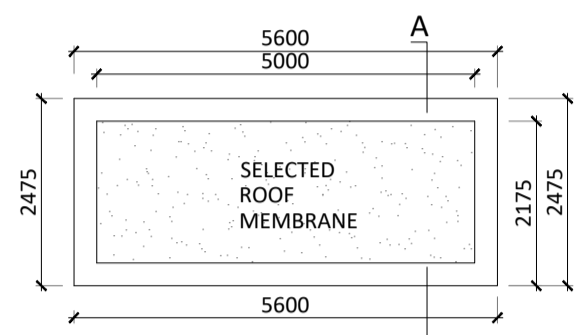


SECTION A-A

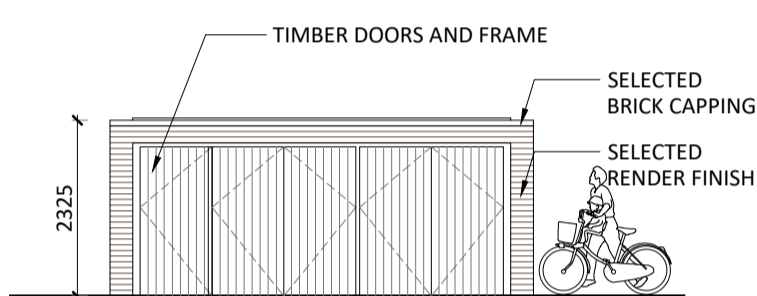
B2 - BIKE STORE (10 SPACES)



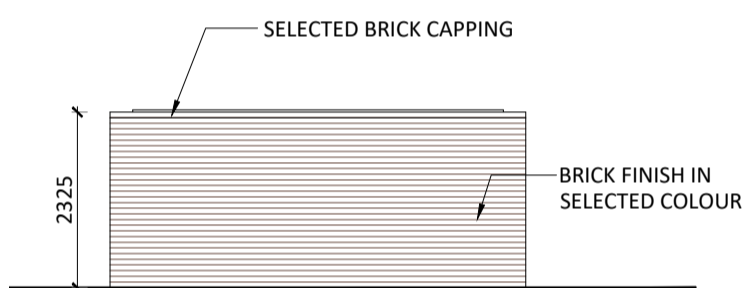
FLOOR PLAN



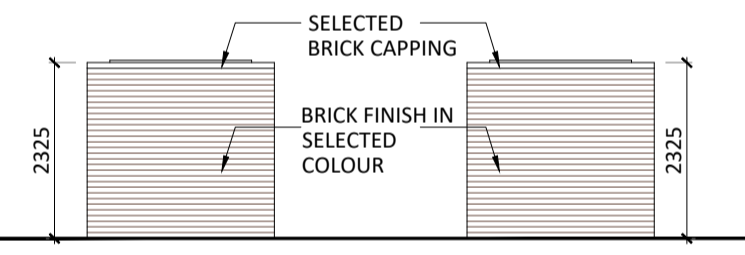
ROOF PLAN



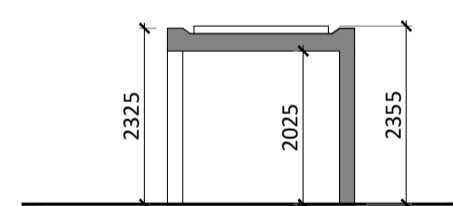
ELEVATION A



ELEVATION C

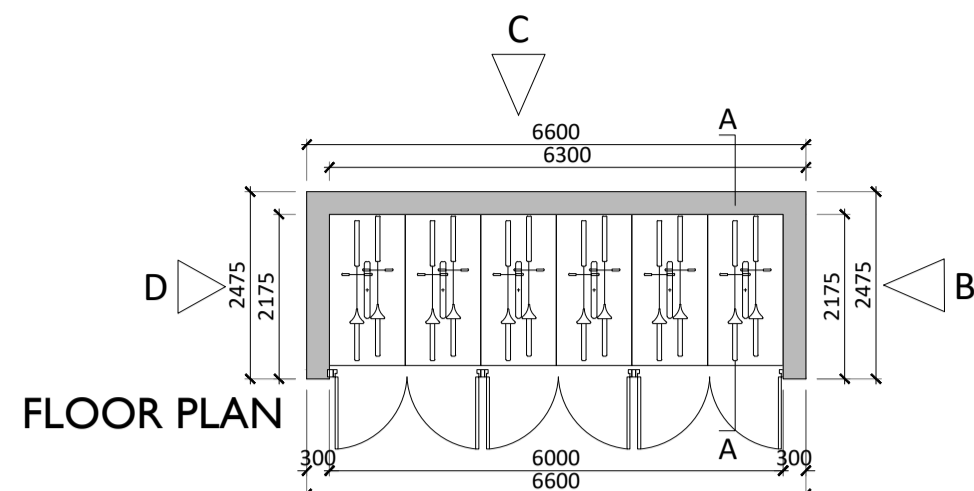


ELEVATION B & D

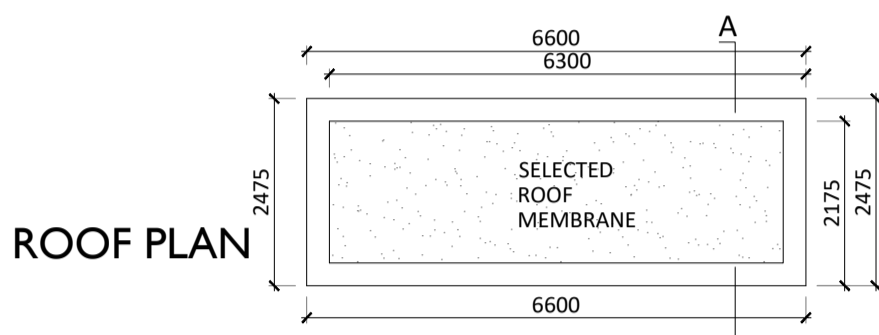


SECTION A-A

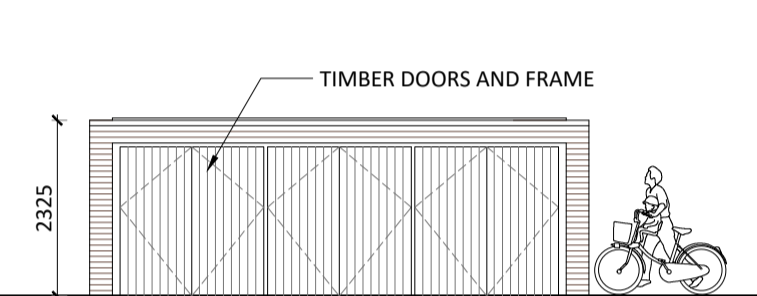
B3 - BIKE STORE (12 SPACES)



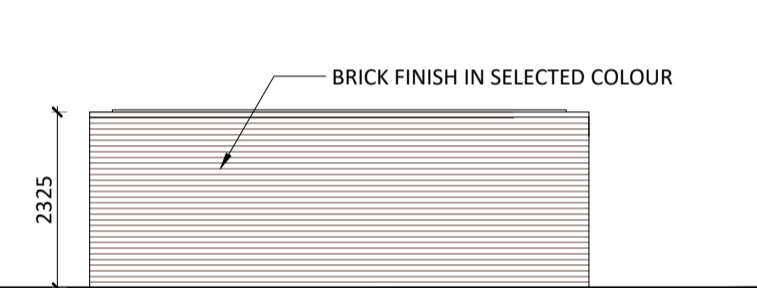
FLOOR PLAN



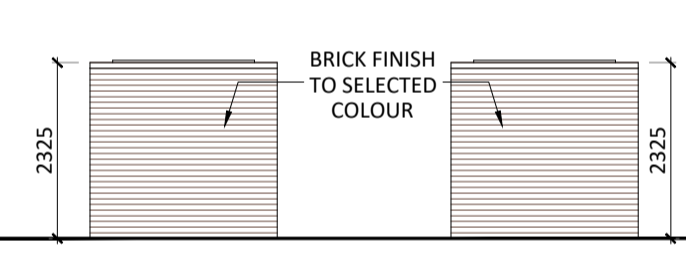
ROOF PLAN



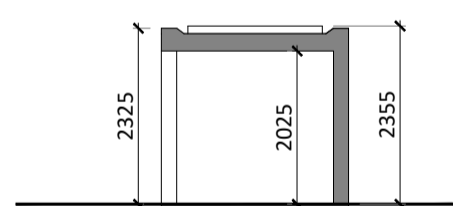
ELEVATION A



ELEVATION C

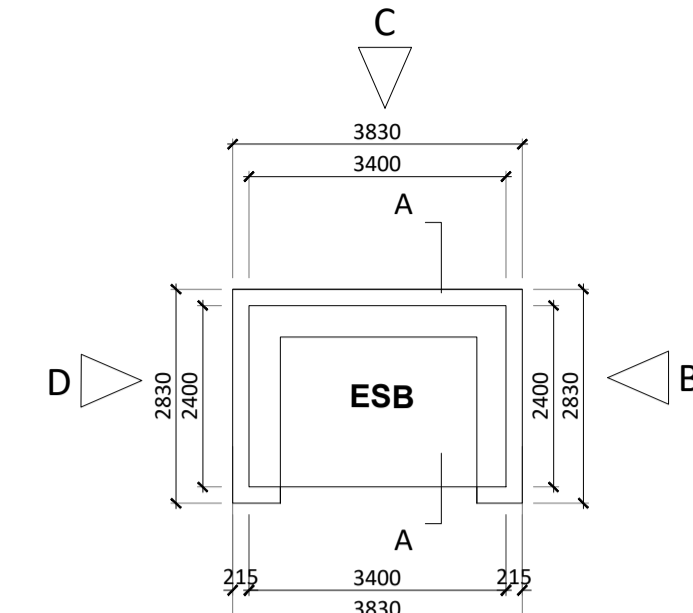


ELEVATION B & D

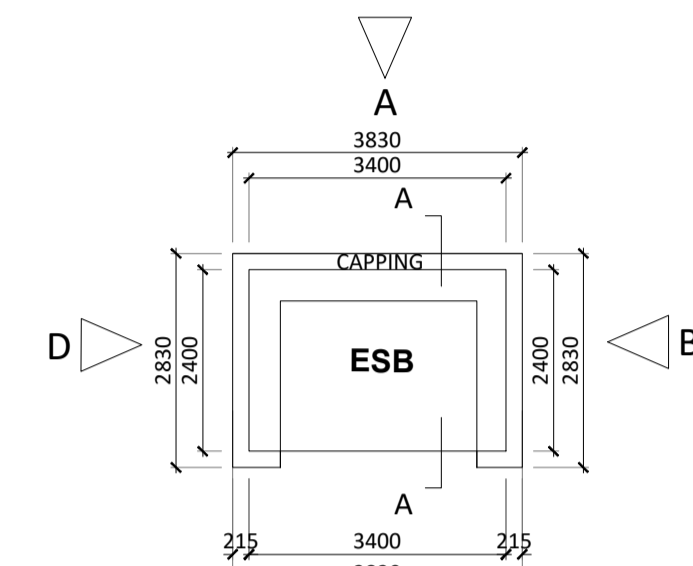


SECTION A-A

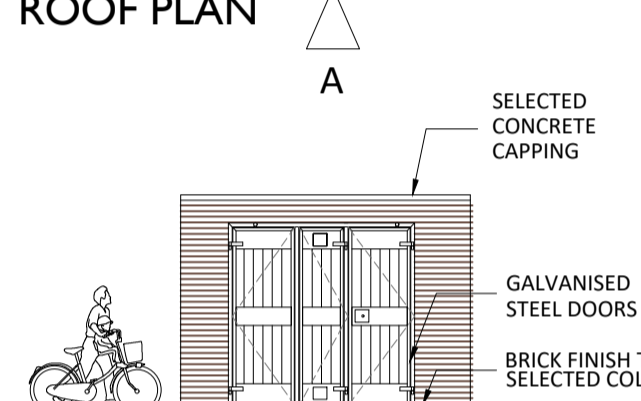
B4 - SUBSTATION



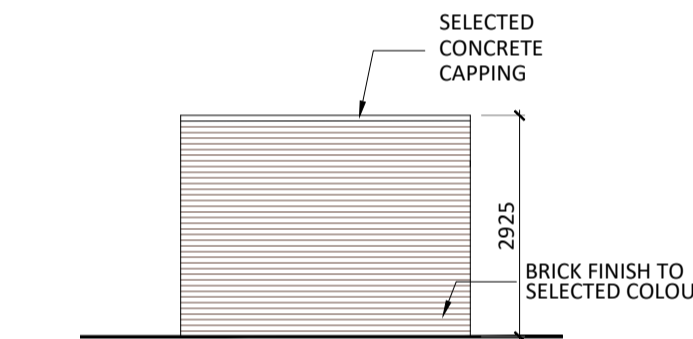
FLOOR PLAN



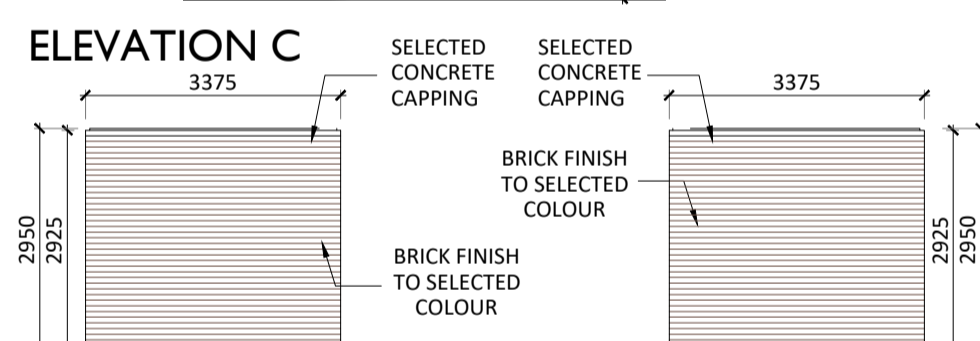
ROOF PLAN



ELEVATION A



ELEVATION C

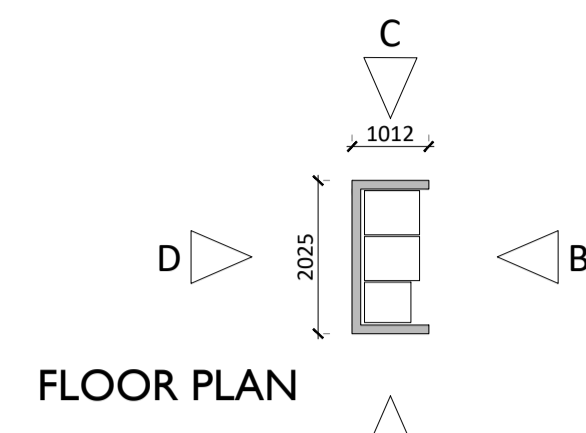


ELEVATION B & D

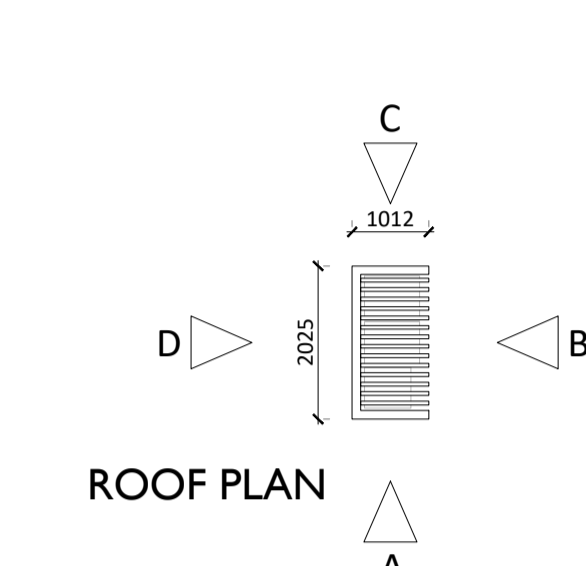


SECTION A-A

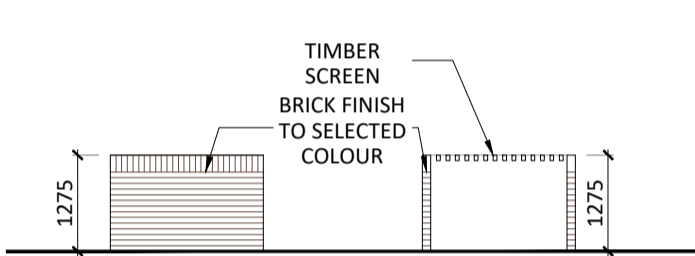
B5 - BIN STORE



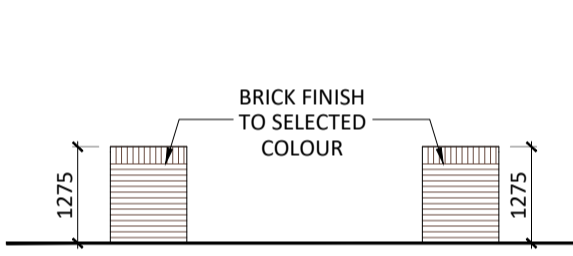
FLOOR PLAN



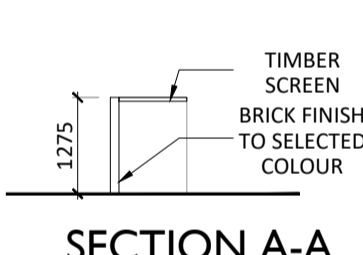
ROOF PLAN



ELEVATION B & D

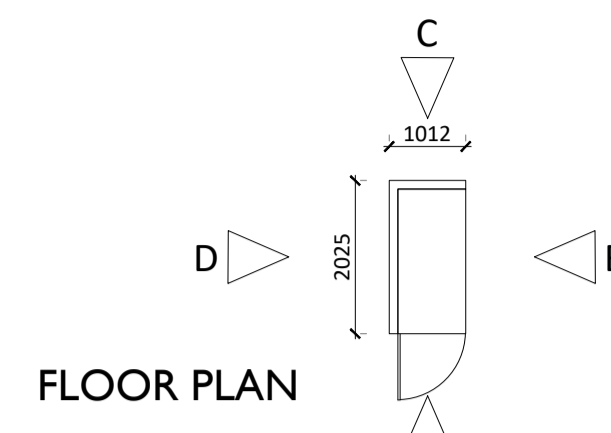


ELEVATION A & C

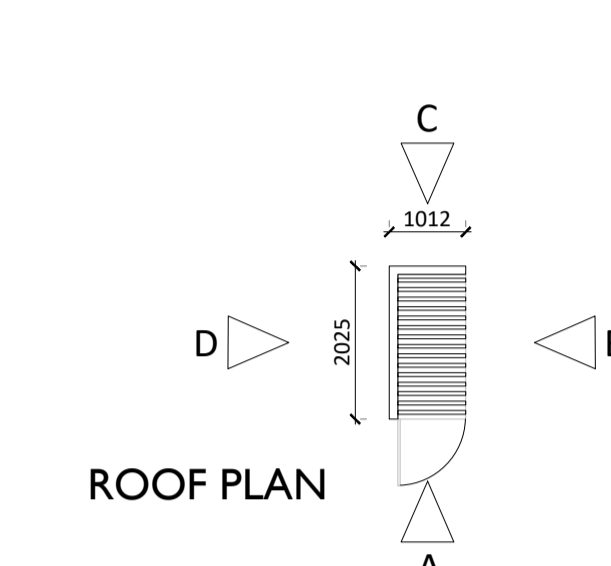


SECTION A-A

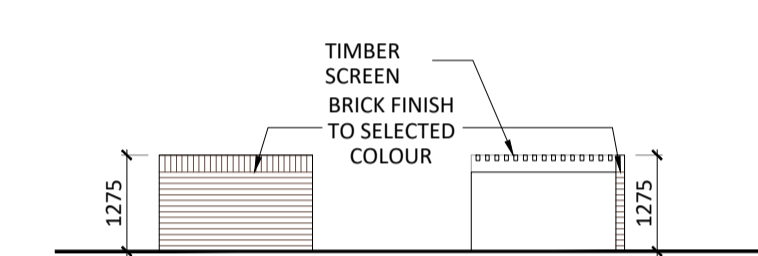
B6 - BIKE LOCKER



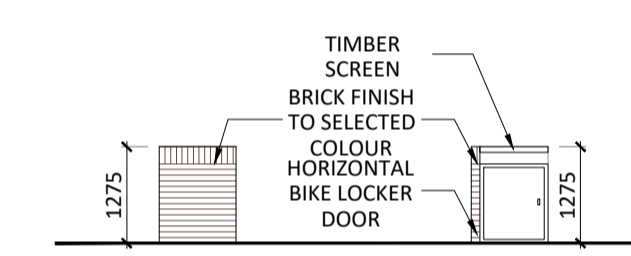
FLOOR PLAN



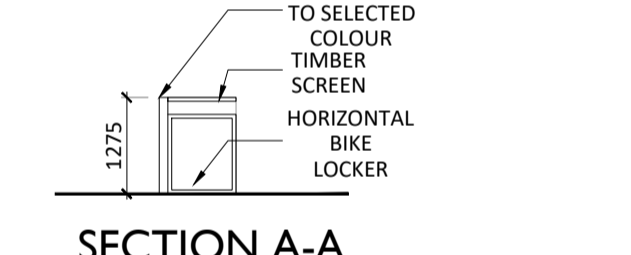
ROOF PLAN



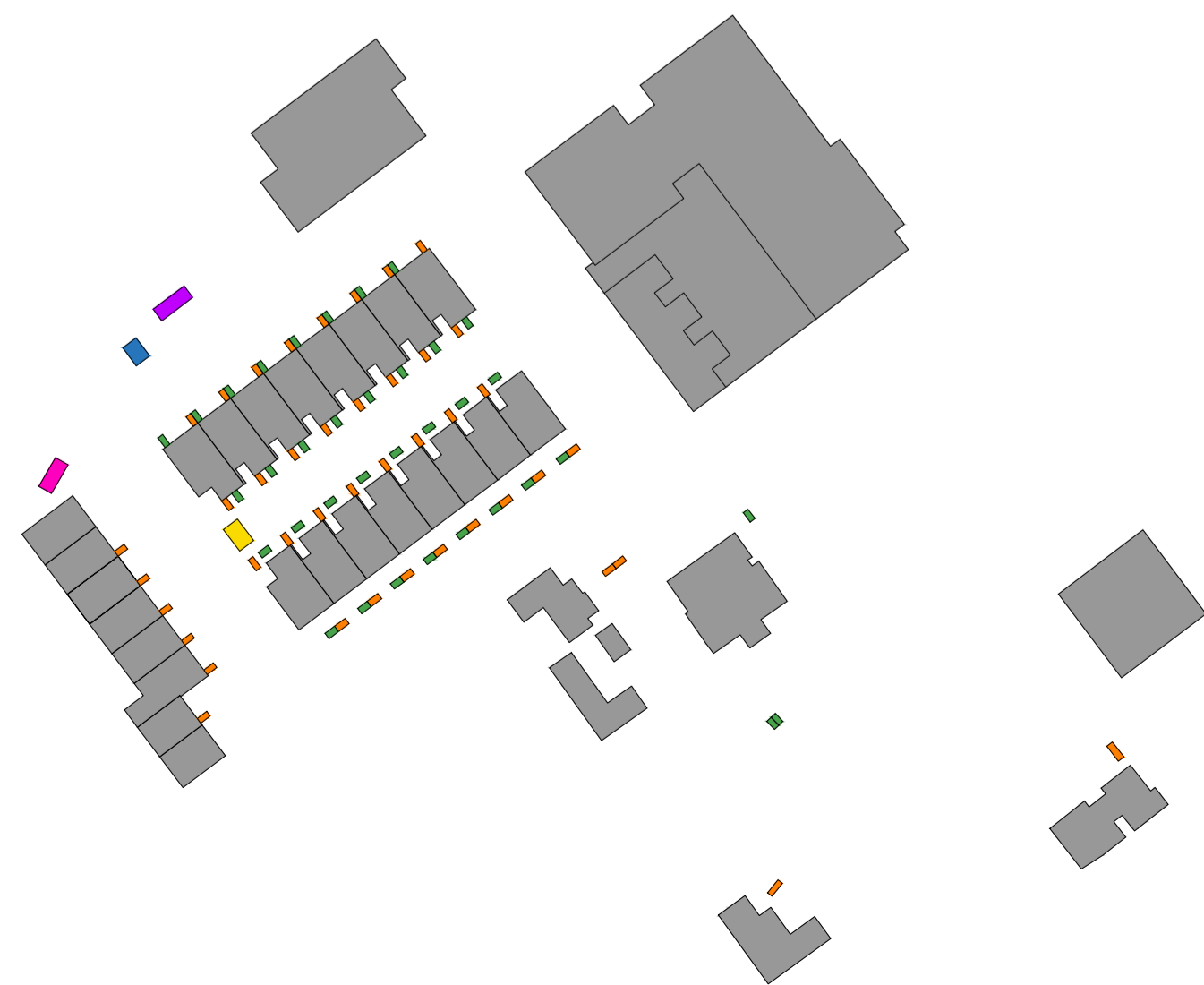
ELEVATION B & D



ELEVATION A & C



SECTION A-A



KEY PLAN  
SCALE N.T.S.

- SUBSTATION
- BIN STORES (HOUSE & DUPLEX)
- BIKE STORE (12 NO.)
- BIKE STORE (10 NO.)
- BIKE STORE (4 NO. CARGO)
- BIKE LOCKERS

Revision Description	Date	Rev. No.	Issued by
LRD Stage 3 Submission	23-10-2024	C03	SK

**mahony pike**

architecture | urban design  
 email: info@mahonypike.com  
 tel: +353 1 202 7400  
 fax: +353 1 283 0822  
 www.mahonypike.com

Project: Knockrabo Phase 2  
 Location: Mt. Anville Road, Dublin 14  
 Client: KIDAC

Drawing Title: Bin Stores, Bike Stores and Substation Drawing  
 Drawing No.: 1307G-OMP-00-ZZ-DR-A-5000

Project Code: N/A  
 Project Lead: SD  
 Drawn By: SK  
 Job No.: 1307G  
 Purpose: LRD Stage 3 Submission

Scale @ A1: 1:100  
 Date Printed: 23-10-2024  
 Current Rev.: C03  
 Status: A3

Any reference to fire safety design or performance is presented for coordination purposes only. Refer only to the granted Fire Safety Certificate, and fire consultant's information for fire safety design, specification and performance.  
 Figure dimensions only to be used. This drawing is copyright of O'Mahony Pike Architects Ltd. All information is shared as per approved use in accordance with ISO19650-2:2018, Table 5; Standard Codes for Suitability of Models and Documents and the BEP. If the 'Status' field is empty, this information has been shared at 50 - WIP.